

# Performance Report for:

<https://blog.r23.de/3d-visualisierung/dreibeinige-stehlampe-mit-w...>

Report generated: Thu, Mar 16, 2023 5:21 PM -0700  
 Test Server Location: Vancouver, Canada  
 Using: Chrome (Desktop) 103.0.5060.134, Lighthouse 9.6.4



## Top Issues

IMPACT	AUDIT	
Med-Low	<b>Eliminate render-blocking resources</b> <small>FCP LCP</small>	Potential savings of 276ms
Med-Low	<b>Use a Content Delivery Network (CDN)</b>	32 resources found
Low	<b>Avoid an excessive DOM size</b> <small>TBT</small>	765 elements
Low	<b>Ensure text remains visible during webfont load</b> <small>FCP LCP</small>	7 fonts found
Low	<b>Reduce unused CSS</b> <small>FCP LCP</small>	Potential savings of 68.8KB

## Page Details



Total Page Size - 570KB



Total Page Requests - 44



Legend: HTML JS CSS IMG Video Font Other

### How does this affect me?

Today's web user expects a fast and seamless website experience. Delivering that fast experience can result in increased visits, conversions and overall happiness.

As if you didn't need more incentive, **Google has announced that they are using page speed in their ranking algorithm.**

### About GTmetrix

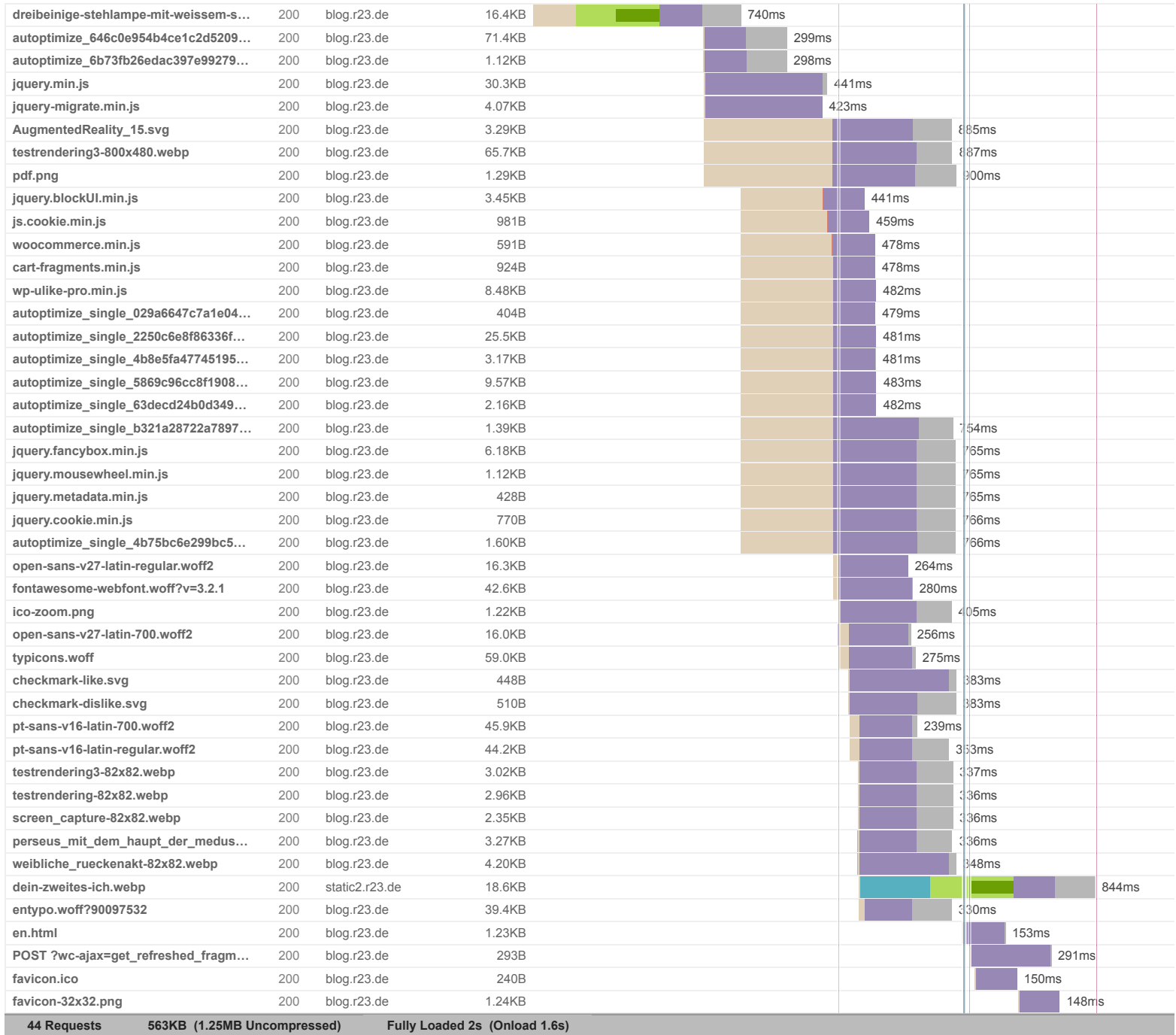


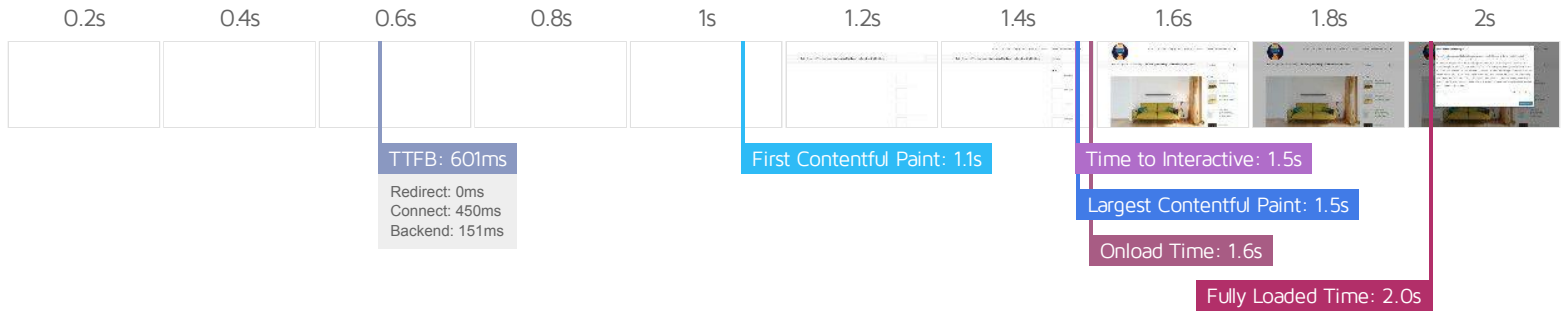
GTmetrix is developed by the good folks at Carbon60, a Canadian hosting company with over 27 years experience in web technology.

<https://carbon60.com/>

The waterfall chart displays the loading behaviour of your site in your selected browser. It can be used to discover simple issues such as 404's or more complex issues such as external resources blocking page rendering.

Dreibeinige Stehlampe mit weißem Stoffschirm - Ate..., V/AR. Produktvisualisierung und Rendering. ♥ r23





### Performance Metrics

<p><b>First Contentful Paint</b></p> <p>How quickly content like text or images are painted onto your page. A good user experience is 0.9s or less.</p>	<p>OK, but consider improvement</p> <p><b>1.1s</b></p>	<p><b>Time to Interactive</b></p> <p>How long it takes for your page to become fully interactive. A good user experience is 2.5s or less.</p>	<p>Good - Nothing to do here</p> <p><b>1.5s</b></p>
<p><b>Speed Index</b></p> <p>How quickly the contents of your page are visibly populated. A good user experience is 1.3s or less.</p>	<p>Longer than recommended</p> <p><b>1.8s</b></p>	<p><b>Total Blocking Time</b></p> <p>How much time is blocked by scripts during your page loading process. A good user experience is 150ms or less.</p>	<p>Good - Nothing to do here</p> <p><b>0ms</b></p>
<p><b>Largest Contentful Paint</b></p> <p>How long it takes for the largest element of content (e.g. a hero image) to be painted on your page. A good user experience is 1.2s or less.</p>	<p>OK, but consider improvement</p> <p><b>1.5s</b></p>	<p><b>Cumulative Layout Shift</b></p> <p>How much your page's layout shifts as it loads. A good user experience is a score of 0.1 or less.</p>	<p>Good - Nothing to do here</p> <p><b>0.03</b></p>

### Browser Timings

Redirect	0ms	Connect	450ms	Backend	151ms
TTFB	601ms	First Paint	1.1s	DOM Int.	1.5s
DOM Loaded	1.5s	Onload	1.6s	Fully Loaded	2.0s

IMPACT	AUDIT	
Med-Low	<b>Eliminate render-blocking resources</b> <span>FCP</span> <span>LCP</span>	Potential savings of 276ms
Med-Low	<b>Use a Content Delivery Network (CDN)</b>	32 resources found
Low	<b>Avoid an excessive DOM size</b> <span>TBT</span>	765 elements
Low	<b>Ensure text remains visible during webfont load</b> <span>FCP</span> <span>LCP</span>	7 fonts found
Low	<b>Reduce unused CSS</b> <span>FCP</span> <span>LCP</span>	Potential savings of 68.8KB
Low	<b>Avoid chaining critical requests</b> <span>FCP</span> <span>LCP</span>	26 chains found
Low	<b>Avoid enormous network payloads</b> <span>LCP</span>	Total size was 570KB
Low	<b>Serve static assets with an efficient cache policy</b>	Potential savings of 9.49KB
Low	<b>Reduce JavaScript execution time</b> <span>TBT</span>	71ms spent executing JavaScript
Low	<b>Reduce initial server response time</b> <span>FCP</span> <span>LCP</span>	Root document took 150ms
Low	<b>Avoid serving legacy JavaScript to modern browsers</b> <span>TBT</span>	Potential savings of 5.73KB
Low	<b>Reduce unused JavaScript</b> <span>LCP</span>	Potential savings of 20.4KB
N/A	<b>Largest Contentful Paint element</b> <span>LCP</span>	1 element found
N/A	<b>Avoid large layout shifts</b> <span>CLS</span>	4 elements found
N/A	<b>Minimize main-thread work</b> <span>TBT</span>	Main-thread busy for 386ms
N/A	<b>User Timing marks and measures</b>	
N/A	<b>Reduce the impact of third-party code</b> <span>TBT</span>	